

Hillsborough Castle and Gardens



Visual Guide



I am going to visit
Hillsborough Castle
and Gardens

I will **explore**, learn new things, and have
fun!





We might get to Hillsborough Castle and Gardens by going in the **car** or **bus**



We might arrive at the
lower site



or the **upper** site



When we arrive we will
meet **Brooke**

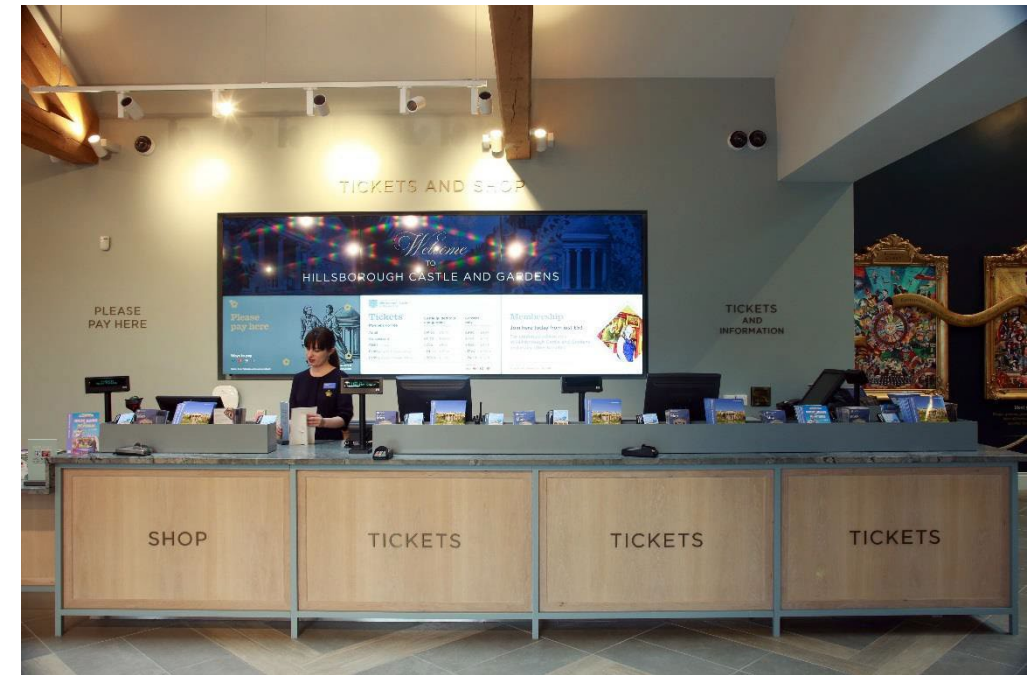
Brooke works for
Hillsborough Castle and
Gardens. She will show us
where to go



We might will go through admissions

This area might be bright and **busy** with people

The admissions staff wear **dark blue uniforms**



We might see some
security staff

The security staff are friendly
and help keep Hillsborough
Castle and Gardens safe for
everyone

If I need to, I can ask the
security staff for help





We might see the
gardens

The gardens have
bright colourful
flowers and a water
fountain





We might see a **buggy**
and **driver**

We might see some
gardeners





We might see the
café

This area might be
busy, **noisy** and
smelly

The café staff wear
blue shirts and
brown aprons





We will go to the **Clore Learning Centre** in the **Stable Yard**

The stable yard might be **noisy** and **busy** with people





We will go up to the
learning rooms

I can take the **stairs** or the
lift





The learning rooms are
bright and **colourful**

There is some art on the
walls

The presenter will teach me
about Hillsborough Castle
and Gardens

If we bring a packed lunch
We will eat it in the
learning rooms





The presenter will take us into the **house**

The house has lots of old **paintings** and **furniture**

The presenter will tell me what I can and cannot **touch**



We will go into the **State Entrance**

The State Entrance might be a bit **dark**



Next we will go through the **Anteroom**



We will go to the **Throne Room** and the **Red Room**

These rooms have
bright colours





We will go to the **Dining Room**



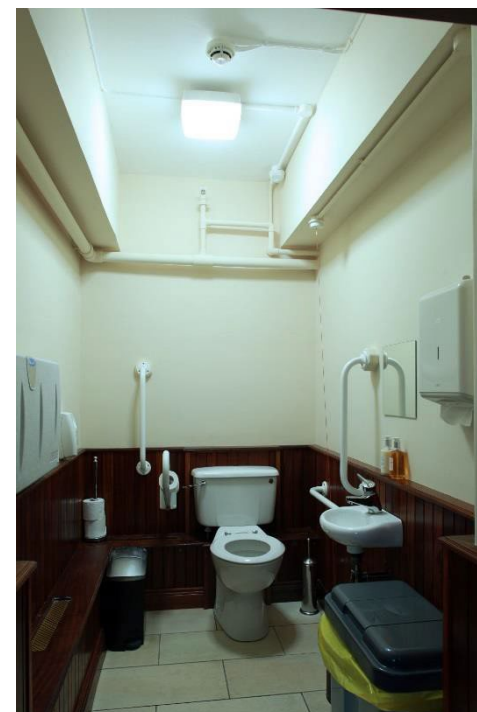
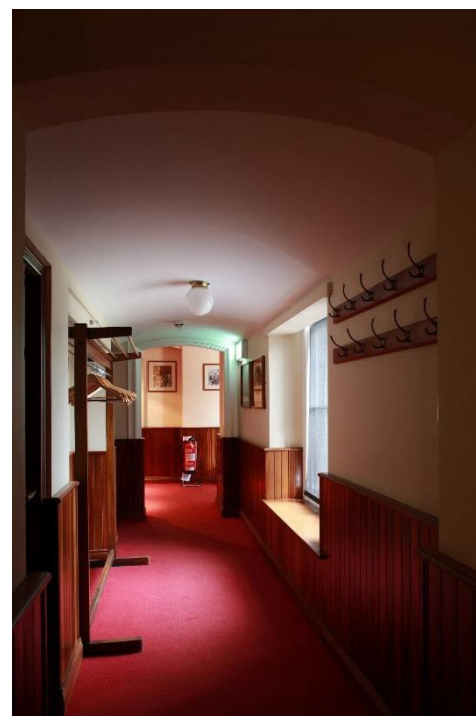
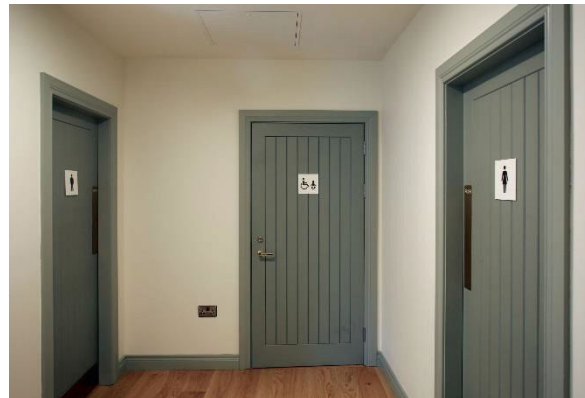
and the **Drawing Room**





If I need to go to the **toilet** I can use the toilets in the **Stable Yard** or the **Clore Learning Centre**

I can also use the toilet inside the **house**





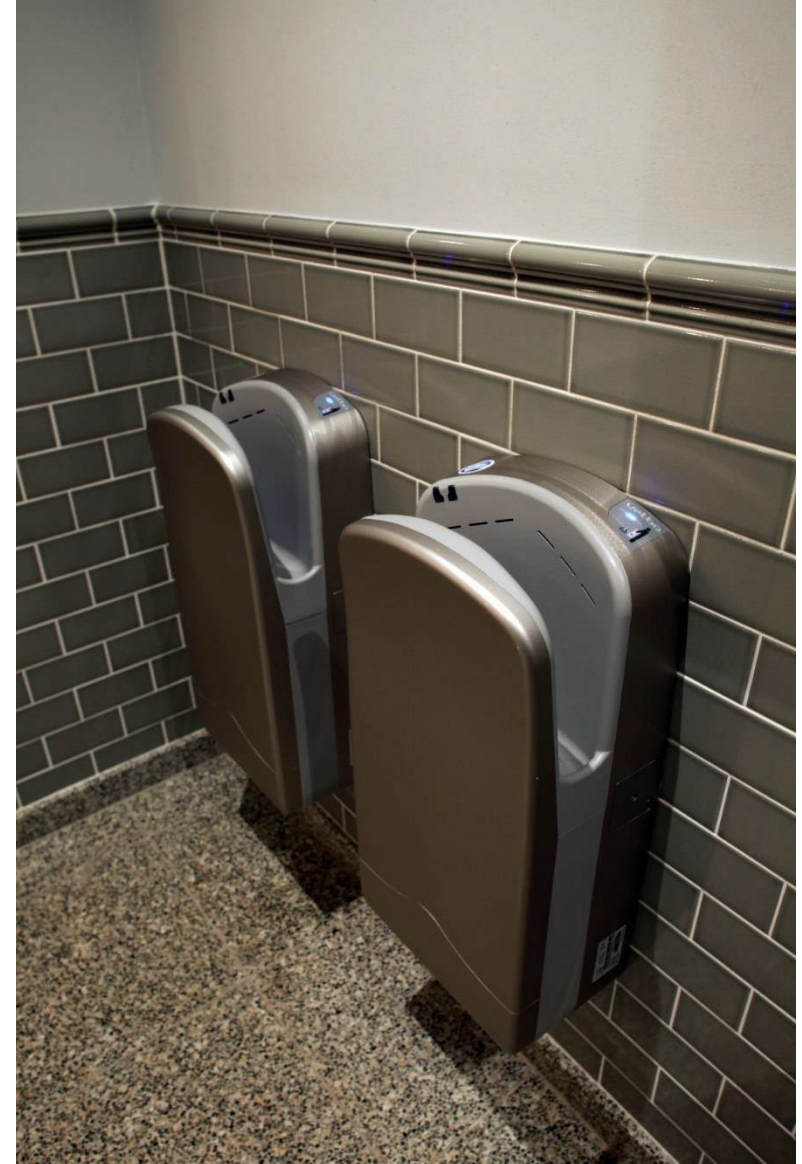
There is also a
**Changing Places
Toilet** near the
entrance at the
Lower Site





The toilets might be
Smelly

Some of them have hand
driers that might be **noisy**

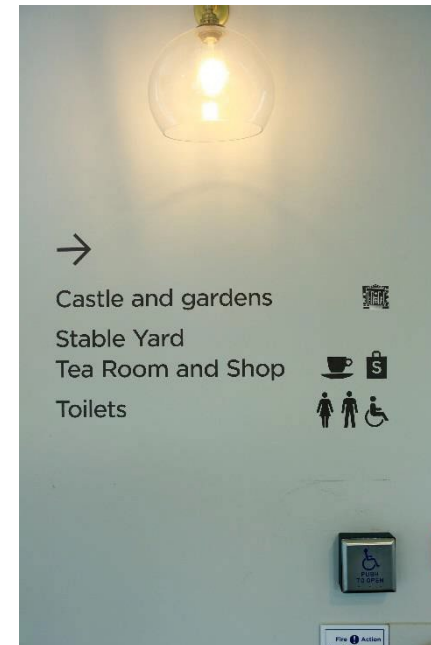




Lots of the **doors** have **buttons** to press to make them open



There are signs to tell people where to go



I will have a great day at
Hillsborough Castle and
Gardens!

