

WELCOME TO KENSINGTON PALACE

We hope you enjoy your visit to this wonderful building, which has been a royal home since 1689.

The palace is divided into two halves – public rooms including the Queen’s and King’s State Apartments, which you can visit and uncover the public and private stories of the royal families that have lived here, and a separate, private side where members of the Royal Family live today.

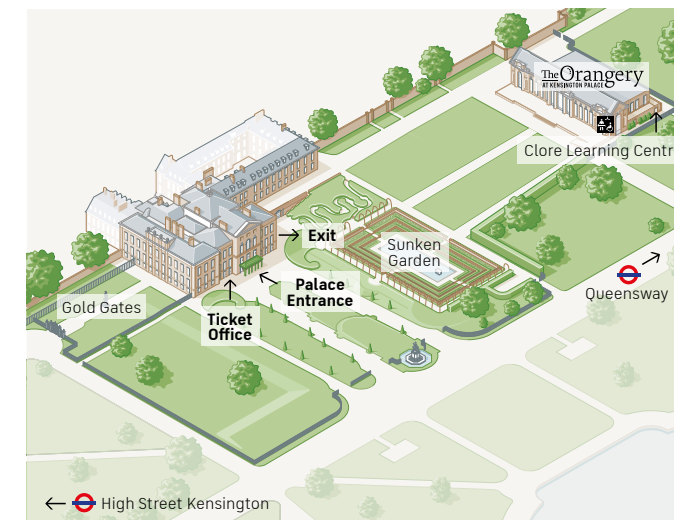
You can choose to visit the exhibitions in any order.

Don’t miss the beautiful Sunken Garden, featuring the statue of Diana, Princess of Wales, unveiled in July 2021.

We have an Audio Guide available free of charge with audio tours of the King’s State Apartments, Queen’s State Apartments and Victoria: A Royal Childhood available in multiple languages, including British Sign Language.

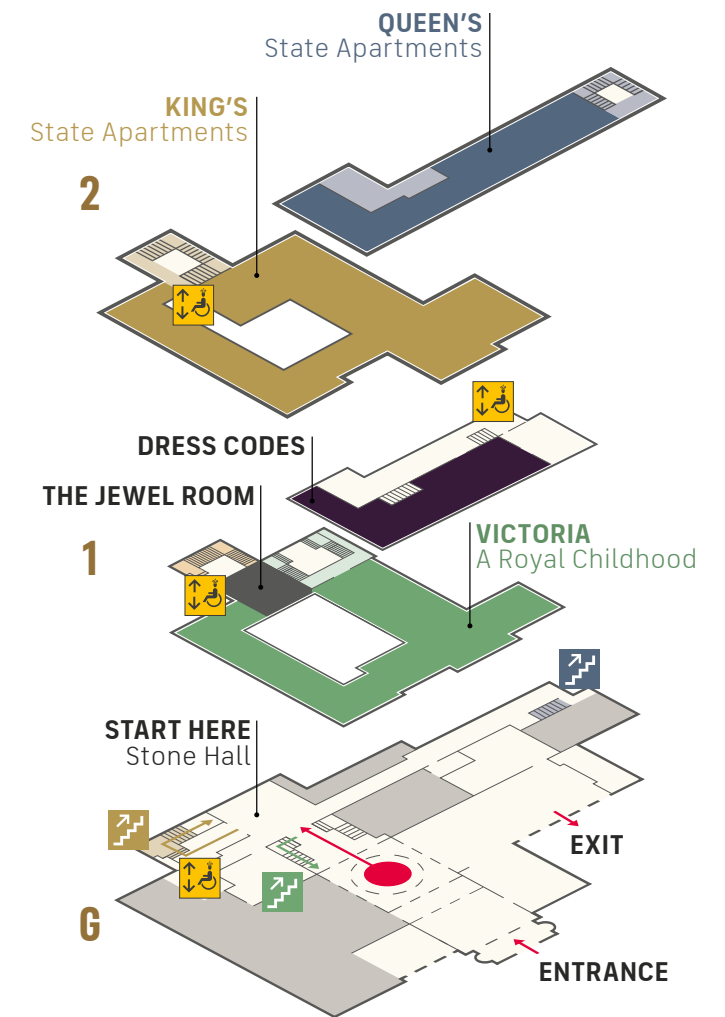
Please ask a member of staff if you require any assistance or have any questions about your visit today.

THE PALACE AND GARDENS



DISCOVER 300 YEARS OF ROYAL HISTORY

All routes are located on the upper floors and marked with different colours as shown on the drawing to the right.



YOUR ROUTE STARTS IN THE STONE HALL

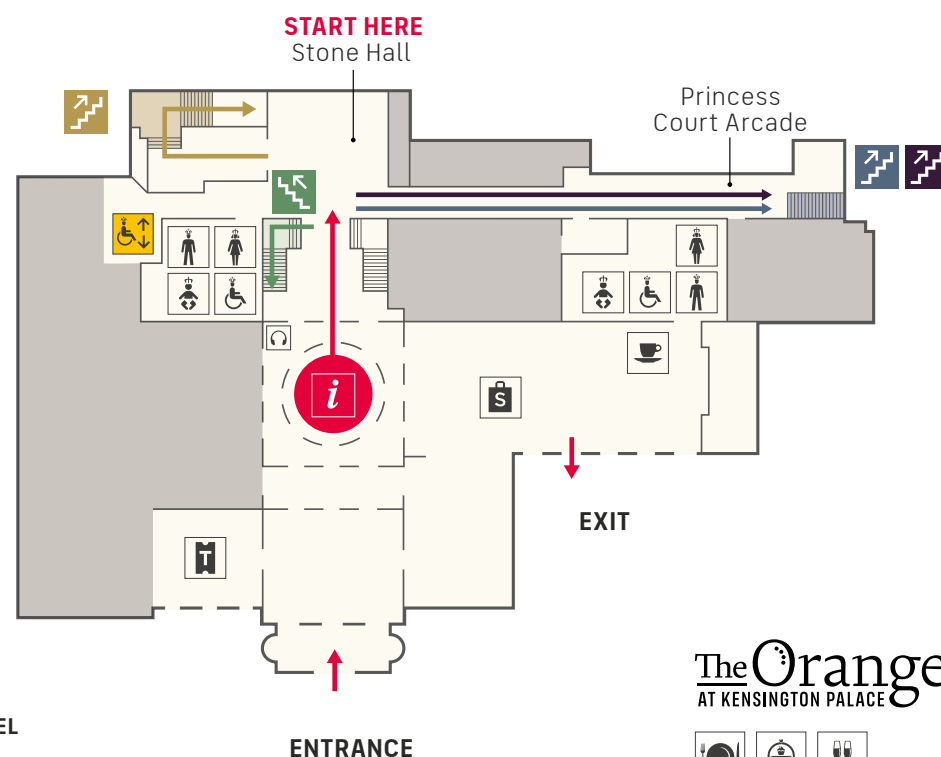
MAP KEY

- Tickets
- The Hub
- Shop
- Male toilet
- Female toilet
- Accessible toilet
- Baby change
- Stairs
- Lift
- Palace Café
- Audio Guide
- Private

Stairs to

- VICTORIA A Royal Childhood
- DRESS CODES
- QUEEN'S State Apartments
- KING'S State Apartments

THE JEWEL ROOM



The Orangery →
AT KENSINGTON PALACE



The Orangery restaurant and tea room is open for delicious breakfasts, light lunches and elegant teas.

REMEMBER

PLEASE DO

- Take photographs, but no flash
- Take video
- Use bicycle racks outside the palace

PLEASE DO NOT

- Touch objects or artworks on display
- Eat or drink in the palace
- Use selfie sticks or tripods in the palace

OPENING TIMES

Summer (1 March – 25 October)

10:00–18:00 (last entry 17:00)

Winter (26 October – 28 February)

10:00–16:00 (last entry 15:00)

ACCESSIBILITY

We have a number of manual wheelchairs available to use free of charge on a first-come first-served basis. These are for indoor use only.

We have folding stools available to use free of charge. These are located after the scanner desk.

Our team are here to help you make the most of your visit. Please ask if you require any assistance.

ACCESS ALL ERAS WITH MEMBERSHIP

Prices start from £60*. Upgrade your ticket on site, join at hrp.org.uk/membership or scan the QR code

Prices valid until 28 February 2026



ACCESS OUR FREE VISITOR GUIDE

Scan the QR code or enter qrco.de/KPmap into your browser



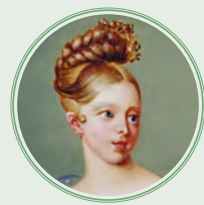
Visit our website for more information hrp.org.uk

kensingtonpalace

@hrp_palaces

historicroyalpalaces

#kensingtonpalace



VICTORIA A ROYAL CHILDHOOD

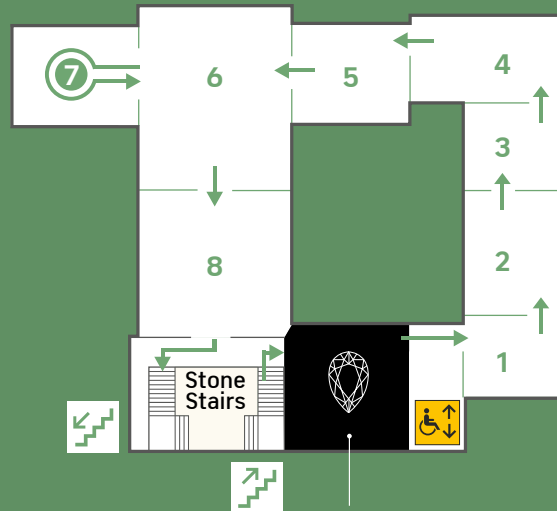
Queen Victoria, 1800s

Experience Queen Victoria's childhood apartments and the vibrant rooms where she was born and grew up. Witness her extraordinary story of teenage survival, amidst family feuds and tragedy, right up to the day she became Queen.

History where it happened

7 The Baby in The Palace

Queen Victoria was born in this room on 24 May 1819. Her parents, the Duke and Duchess of Kent, travelled over from Germany at the last minute so that their daughter would be born in England. After her safe arrival, the Duchess of Kent declared that baby Victoria was 'a pretty little Princess, plump as a partridge.'



THE JEWEL ROOM

1

KEY

- | | |
|------------------------|--------------------------|
| 1 Young Victoria | 5 Family Feuds |
| 2 The Princess at Play | 6 The Birthday Ball |
| 3 Educating Victoria | 7 The Baby in the Palace |
| 4 A Royal Performance | 8 Becoming Queen |



KING'S STATE APARTMENTS

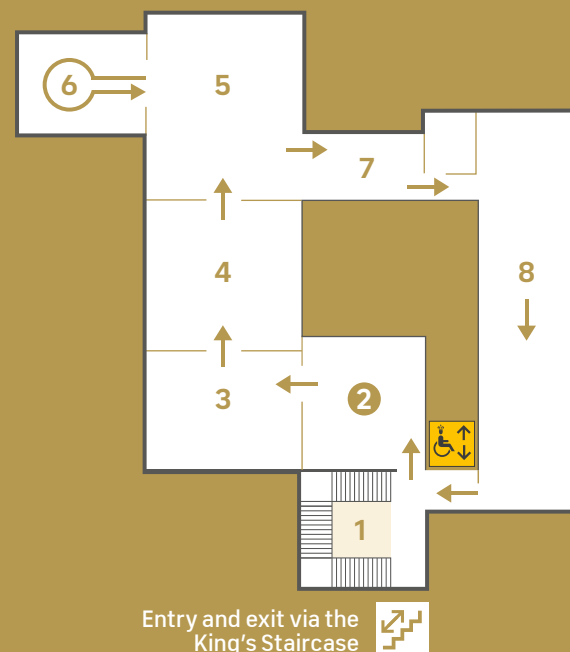
The Georgians, 1700s

Explore the glittering court of George II and his wife Queen Caroline. Discover the era of music, fashion and the arts brought to life in the splendid and sumptuously restored State Apartments.

History where it happened

2 The Presence Chamber

In the Presence Chamber the King received important guests, seated on a throne. In 1734 a delegation of Yamacraw native Americans was introduced to George II here. They presented him with a traditional tribute of eagle feathers as an emblem of peace.

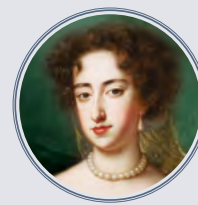


Entry and exit via the King's Staircase

2

KEY

- | | |
|------------------------|---------------------------|
| 1 The King's Staircase | 5 The King's Drawing Room |
| 2 The Presence Chamber | 6 The Council Chamber |
| 3 The Privy Chamber | 7 Queen Caroline's Closet |
| 4 The Cupola Room | 8 The King's Gallery |



QUEEN'S STATE APARTMENTS

The Stuarts, 1690s

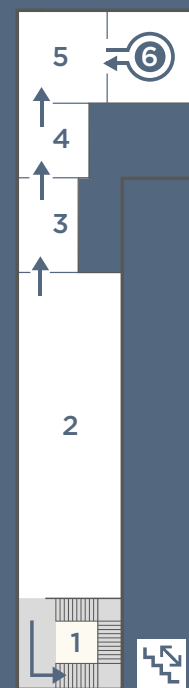
Step inside the oldest part of the palace. These intimate rooms were created for Queen Mary II, who ruled with her husband, King William III.

If you require level access to the Queen's State Apartments, please speak to a member of staff in the King's State Apartments

History where it happened

6 The Queen's Bedchamber

Queen Mary died in the room next to this on 28 December 1694. The much-loved queen had contracted smallpox a week earlier and had been putting her affairs in order. Her distraught husband slept in the room on a camp bed, against the advice of the doctors. She was only 32 years old when she died.



Entry and exit via the Queen's Staircase

2

KEY

- | | |
|-------------------------|----------------------------|
| 1 The Queen's Staircase | 4 The Queen's Dining Room |
| 2 The Queen's Gallery | 5 The Queen's Drawing Room |
| 3 The Queen's Closet | 6 The Queen's Bedchamber |



DRESS CODES

1780s – Present

Explore the codes and conventions of royal clothing, and the powerful impact fashion can make when boundaries are pushed and dress codes evolve.

If you require level access to Dress Codes, please speak to a member of staff in the Victoria: A Royal Childhood exhibition.

History where it happened

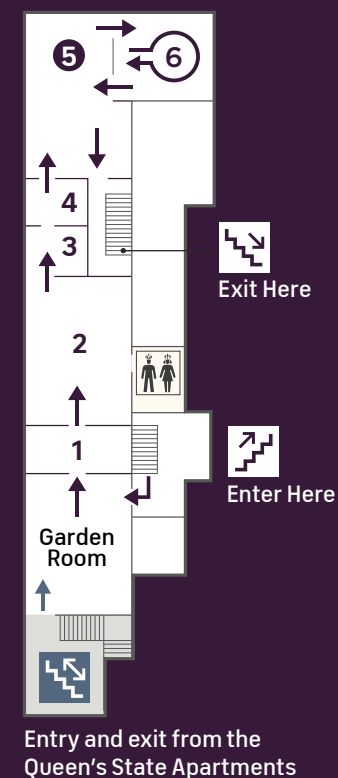
5 Cracking the Codes

Diana, Princess of Wales, lived at Kensington Palace from 1982 to 1997. She worked with London designers and learned how to make a dramatic impact by using royal dress codes with her own iconic sense of style.

Exhibition generously supported by

BLAVATNIK
FAMILY FOUNDATION

AVIS
CHARLES
ASSOCIATES



Entry and exit from the Queen's State Apartments

1

KEY

- | | |
|---------------------|-----------------------|
| 1 Introduction | 4 Decoding Materials |
| 2 Writing the Codes | 5 Cracking the Codes |
| 3 Writing the Codes | 6 Resetting the Codes |