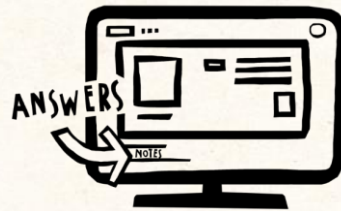


HOW TO USE - NOTES FOR TEACHERS

These resources from Historic Royal Palaces are multi-purpose.
They are ready for you to tweak and use in your lessons.



For the best experience,
download and open the
file in the PowerPoint
desktop app.



Answers are found
under the slide. Click
on the notes symbol at
the bottom of the screen.



Delete text and images
to make your own
worksheets.

Disclaimer and Use Terms

We are the owner or the licensee of all intellectual property rights in these resources which are protected by copyright laws and treaties around the world. All such rights are reserved. These resources, and the content included within them, may be used by you for educational purposes only. This means that you may download the resources and use or share them solely in educational environments (including for home school lessons) or as part of homework. You may not share the resources other than for the above purposes and you must not use the resources, or any part of them, for any commercial purpose.

GEORGIAN TO VICTORIAN FAMILY TREE



GEORGE I
1660-1727
(r. 1714-27)



SOPHIA DORETHEA
1666-1726



GEORGE II
1683-1760
(r. 1727-60)





CAROLINE
OF ANSBACH



KEY

r. reigned

 monarch

 married



HISTORIC
ROYAL PALACES

Find more resources at hrp.org.uk/schools

GEORGIAN TO VICTORIAN FAMILY TREE



GEORGE I
1660-1727
(r. 1714-27)



SOPHIA DORETHEA
1666-1726



GEORGE II
1683-1760
(r. 1727-60)



**CAROLINE
OF ANSBACH**
1683-1737



**FREDERICK
PRINCE OF WALES**
1707-51



**AUGUSTA
OF SAXE-GOTHA**
1719-72



GEORGE III
1738-1820
(r. 1760-1820)





**CHARLOTTE
OF MECKLENBERG**
1744-1818



KEY

r. reigned

 monarch

 married

GEORGIAN TO VICTORIAN FAMILY TREE



GEORGE I
1660-1727
(r. 1714-27)



SOPHIA DORETHEA
1666-1726



GEORGE II
1683-1760
(r. 1727-60)



CAROLINE OF ANSBACH
1683-1737



FREDERICK PRINCE OF WALES
1707-51



GEORGE III
1738-1820
(r. 1760-1820)

AUGUSTA OF SAXE-GOTHA
1719-72



CHARLOTTE OF MECKLENBERG
1744-1818

King George III and Queen Charlotte had 3 other sons and 6 daughters.



CAROLINE OF BRUNSWICK
1768-1821



GEORGE IV
1762-1830
(r. 1820-30)



ADELAIDE OF SAXE-MENINGEN
1792-1849



WILLIAM IV
1765-1837
(r. 1830-7)



EDWARD DUKE OF KENT
1767-1820



VICTOIRE OF SAXE-COBURG-SAALFELD
1786-1861

KEY

- r. reigned
- 👑 monarch
- ⚭ married

GEORGIAN TO VICTORIAN FAMILY TREE

KEY

- r. reigned
- 👑 monarch
- == married



GEORGE I
1660-1727
(r. 1714-27)



SOPHIA DORETHEA
1666-1726



GEORGE II
1683-1760
(r. 1727-60)



CAROLINE OF ANSBACH
1683-1737



FREDERICK PRINCE OF WALES
1707-51



GEORGE III
1738-1820
(r. 1760-1820)



AUGUSTA OF SAXE-GOTHA
1719-72



CHARLOTTE OF MECKLENBERG
1744-1818



CAROLINE OF BRUNSWICK
1768-1821



GEORGE IV
1762-1830
(r. 1820-30)



CHARLOTTE
1796-1817



ADELAIDE OF SAXE-MENINGEN
1792-1849



WILLIAM IV
1765-1837
(r. 1830-7)



EDWARD DUKE OF KENT
1767-1820



ALBERT OF SAXE-COBURG & GOTHA
1819-61



VICTORIA
1819-1901
(r. 1837-1901)

VICTOIRE OF SAXE-COBURG-SAALEFELD
1786-1861



Find more resources at hrp.org.uk/schools

GEORGIAN TO VICTORIAN FAMILY TREE



GEORGE I
1660-1727
(r. 1714-27)



SOPHIA DORETHEA
1666-1726



GEORGE II
1683-1760
(r. 1727-60)



CAROLINE OF ANSBACH
1683-1737



FREDERICK PRINCE OF WALES
1707-51



AUGUSTA OF SAXE GOTHA
1719-72



GEORGE III
1738-1820
(r. 1760-1820)



CHARLOTTE OF MECKLENBERG
1744-1818



CAROLINE OF BRUNSWICK
1768-1821



GEORGE IV
1762-1830
(r. 1820-30)



CHARLOTTE
1796-1817

ADELAIDE OF SAXE-MENINGEN
1792-1849



WILLIAM IV
1765-1837
(r. 1830-7)



EDWARD DUKE OF KENT
1767-1820



VICTOIRE OF SAXE-COBURG-SAALFELD
1786-1861



ALBERT OF SAXE-COBURG & GOTHA
1819-61



VICTORIA
1819-1901
(r. 1837-1901)



What happened before?

The Stuart Queen Anne died without an **heir**. George I was her second cousin and a Protestant so he became King.

KEY

r. reigned
 monarch
 married

What happened after?

After Queen Victoria died, her eldest son, Albert Edward, became King Edward VII.



Find more resources at hrp.org.uk/schools

CLASSROOM TASKS



Q1 How was George I related to Caroline of Ansbach?

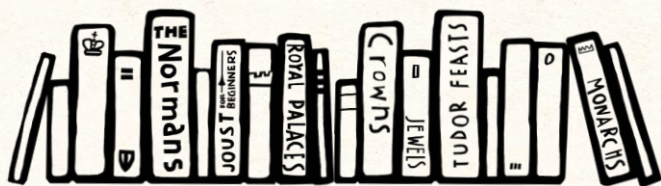
Q2 How many children did George III and Queen Charlotte have in total?

Q3 In what year did William IV's wife die?

Q4 What was the name of Queen Victoria's grandfather on her father's side?

VOCABULARY LIST

heir | the person who will become the next king or queen



IMAGES

George I | © National Portrait Gallery, London

George II | © National Portrait Gallery, London

Caroline of Ansbach | © National Portrait Gallery, London

George III | © National Portrait Gallery, London

Charlotte of Mecklenberg | Royal Collection Trust / © His Majesty King Charles III 2024

George IV | Royal Collection Trust / © His Majesty King Charles III 2024

William IV | | Royal Collection Trust / © His Majesty King Charles III 2024

Victoria | Royal Collection Trust / © His Majesty King Charles III 2024

