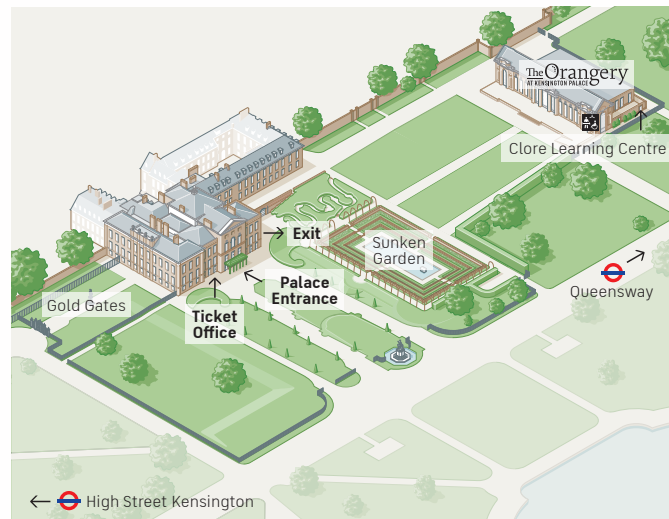


THE PALACE AND GARDENS



DISCOVER 300 YEARS OF ROYAL HISTORY

All routes are located on the upper floors and marked with different colours as shown on the drawing below.



VICTORIA A ROYAL CHILDHOOD

Queen Victoria, 1800s

Experience Queen Victoria's childhood apartments and the vibrant rooms where she was born and grew up. Witness her extraordinary story of teenage survival, amidst family feuds and tragedy, right up to the day she became Queen.

History where it happened

7 The Baby in The Palace

Queen Victoria was born in this room on 24 May 1819. Her parents, the Duke and Duchess of Kent, travelled over from Germany at the last minute so that their daughter would be born in England. After her safe arrival, the Duchess of Kent declared that baby Victoria was 'a pretty little Princess, plump as a partridge.'



KING'S STATE APARTMENTS

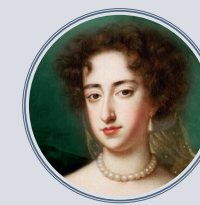
The Georgians, 1700s

Explore the glittering court of George II and his wife Queen Caroline. Discover the era of music, fashion and the arts brought to life in the splendid and sumptuously restored State Apartments.

History where it happened

2 The Presence Chamber

In the Presence Chamber the King received important guests, seated on a throne. In 1734 a delegation of Yamacraw native Americans was introduced to George II here. They presented him with a traditional tribute of eagle feathers as an emblem of peace.



QUEEN'S STATE APARTMENTS

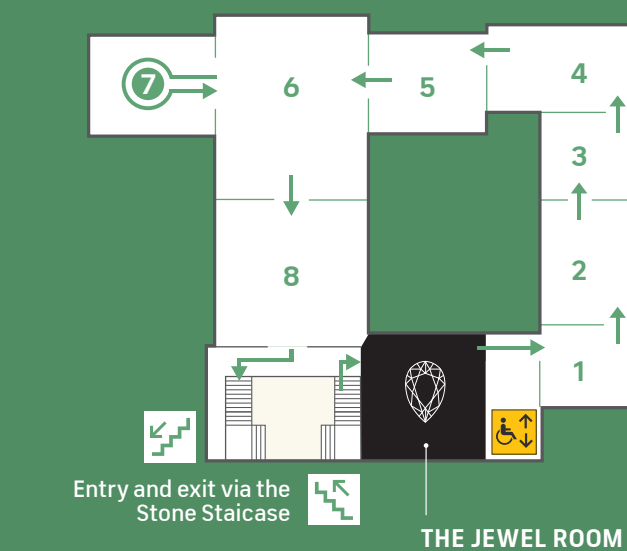
The Stuarts, 1690s

Step inside the oldest part of the palace. These intimate rooms were created for Queen Mary II, who ruled with her husband, King William III.

History where it happened

6 The Queen's Bedchamber

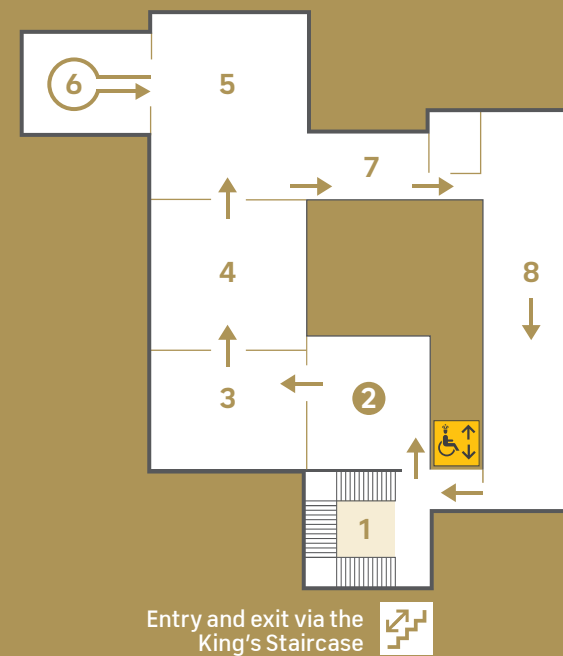
Queen Mary died in the room next to this on 28 December 1694. The much-loved queen had contracted smallpox a week earlier and had been putting her affairs in order. Her distraught husband slept in the room on a camp bed, against the advice of the doctors. She was only 32 years old when she died.



1

KEY

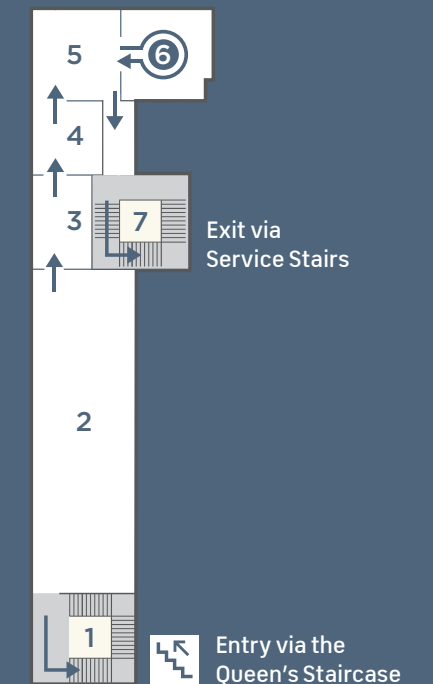
- | | |
|------------------------|--------------------------|
| 1 Young Victoria | 5 Family Feuds |
| 2 The Princess at Play | 6 The Birthday Ball |
| 3 Educating Victoria | 7 The Baby in The Palace |
| 4 A Royal Performance | 8 Becoming Queen |



2

KEY

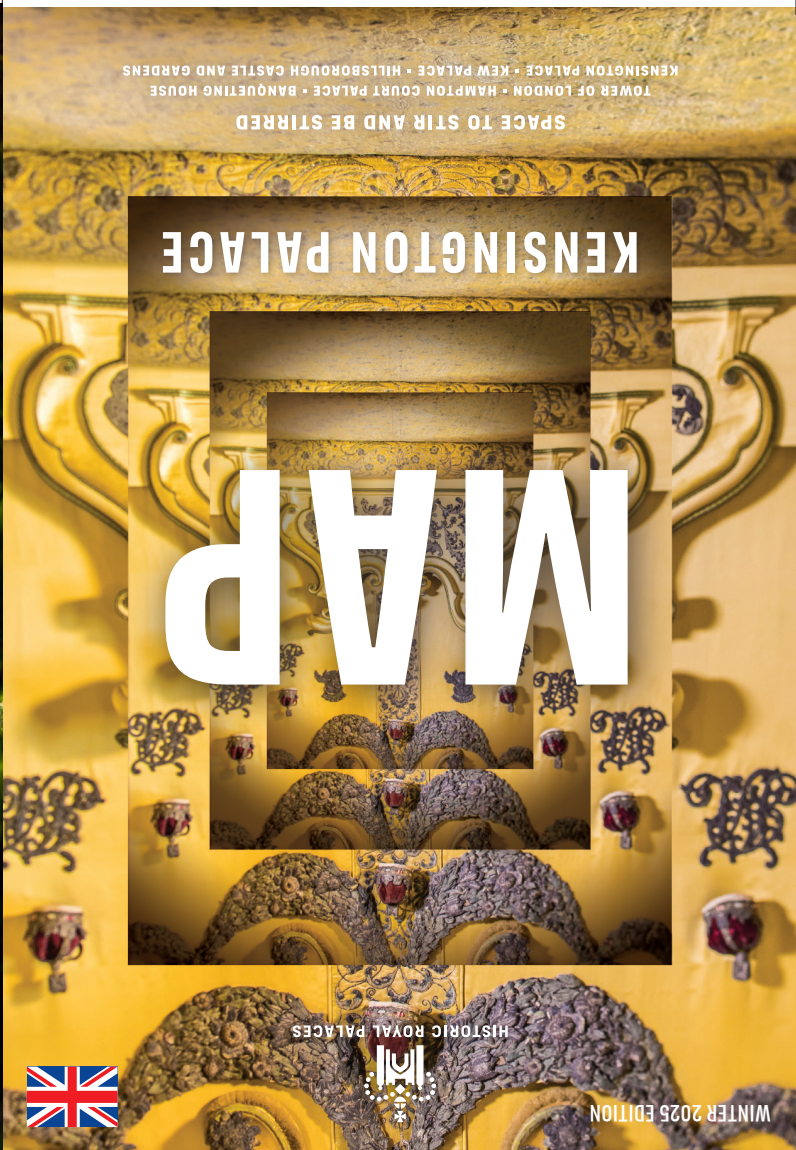
- | | |
|------------------------|---------------------------|
| 1 The King's Staircase | 5 The King's Drawing Room |
| 2 The Presence Chamber | 6 The Council Chamber |
| 3 The Privy Chamber | 7 Queen Caroline's Closet |
| 4 The Cupola Room | 8 The King's Gallery |



2

KEY

- | | |
|---------------------------|----------------------------|
| 1 The Queen's Staircase | 5 The Queen's Drawing Room |
| 2 The Queen's Gallery | 6 The Queen's Bedchamber |
| 3 The Queen's Closet | 7 Service Stairs |
| 4 The Queen's Dining Room | |



WELCOME TO KENSINGTON PALACE

We hope you enjoy your visit to this wonderful building, which has been a royal home since 1689.

The palace is divided into two halves – public rooms including the Queen’s and King’s State Apartments, which you can visit and uncover the public and private stories of the royal families that have lived here, and a separate, private side where members of the Royal Family live today.

You can choose to visit the exhibitions in any order.

Don’t miss the beautiful Sunken Garden, featuring the statue of Diana, Princess of Wales, unveiled in July 2021.

We have an Audio Guide available free of charge with audio tours of the King’s State Apartments, Queen’s State Apartments and Victoria: A Royal Childhood available in multiple languages, including British Sign Language.

We have Access Guides available on site. These provide details about each palace area, what to expect during your visit, toilets, and step-free routes.

Please ask a member of staff if you require any assistance or have any questions about your visit today.

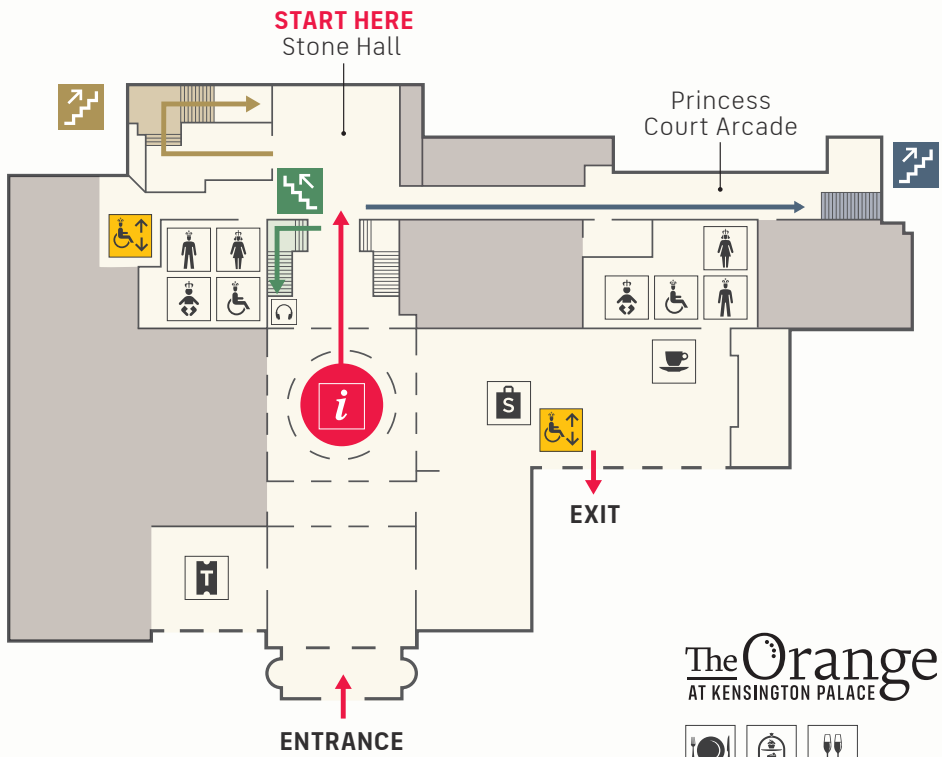
YOUR ROUTE STARTS IN THE STONE HALL

MAP KEY

- Tickets
- The Hub
- Shop
- Male toilet
- Female toilet
- Accessible toilet
- Baby change
- Stairs
- Lift
- Palace Café
- Audio Guide
- Private

Stairs to

- VICTORIA**
A Royal Childhood
- THE JEWEL ROOM**
- QUEEN'S**
State Apartments
- KING'S**
State Apartments



The Orangery →
AT KENSINGTON PALACE

The Orangery restaurant and tea room is open for delicious breakfasts, light lunches and elegant teas.

REMEMBER

PLEASE DO

- Take photographs without flash
- Take videos
- Use bicycle racks by the Orangery

PLEASE DO NOT

- Touch objects or artworks on display
- Eat or drink in the palace
- Use selfie sticks or tripods in the palace

OPENING TIMES

Winter (26 October 2025 – 28 February 2026)
10:00–16:00 (last entry 15:00)

Summer (1 March 2026 – 25 October 2026)
10.00 – 18.00 (last entry 17.00)

ACCESSIBILITY

We have a number of manual wheelchairs available to use free of charge on a first-come first-served basis. These are for indoor use only.

We have folding stools available to use free of charge. These are located after the scanner desk.

Our team are here to help you make the most of your visit. Please ask if you require any assistance.