

Hillsborough Castle and Gardens



Visual Guide

I am going to visit
Hillsborough Castle
and Gardens.

I will **explore**, **learn** new
things, and have **fun**!



We might get to Hillsborough Castle and Gardens by going in the **car** or **bus**.



We might arrive at the **carpark**.



Or arrive at the **village** entrance.



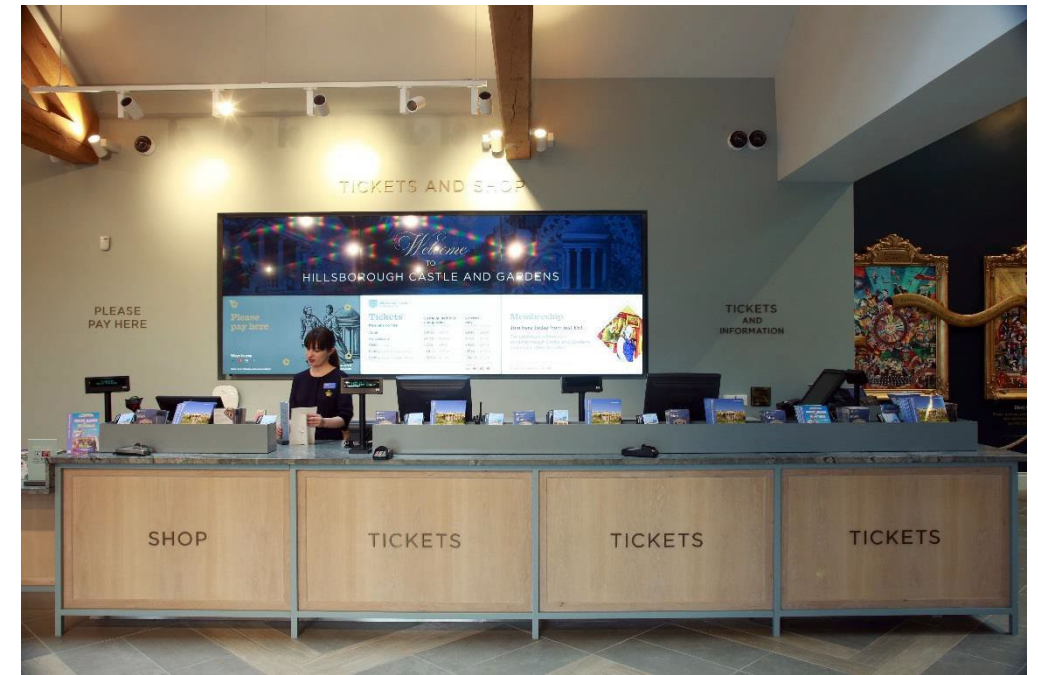
When we arrive we will meet **Brooke**.
Brooke works for Hillsborough Castle.
She will show us where to go.



We might will go through **admissions.**

This area might be **bright** and **busy** with people

The admissions staff wear **dark blue uniforms.**



We might see some **security staff**.

The security staff are **friendly** and help keep Hillsborough Castle and Gardens safe for everyone.

If I need to, I can ask the security staff for **help**.



We might see the **gardens**.

The gardens have **bright, colourful** flowers and a water **fountain**.



We might see a **minibus** and **driver**.

We might see some **gardeners**.



We might visit the **Café.**

This area might be **busy**, **noisy** and **smelly.**



The café staff wear **blue shirts** and **brown aprons.**



We will go to the **Clore Learning Centre** in the **Stable Yard**.



We will go up to the education rooms. I can take the **stairs** or the **lift**.



The education rooms are **bright** and **colourful**.

There are pictures on the walls.

The **presenter** will teach me about Hillsborough Castle and Gardens.

If we bring a **packed lunch** we will eat it in these rooms.



The **presenter** will take us into the **house**.

The house has lots of old **paintings** and **furniture**.

The presenter will tell me what I can and cannot **touch**.



We will go into the **State Entrance**.

The State Entrance might be a bit **dark**.



Next we will go into the **Anteroom**.



We will go to the **Throne Room** and the **Red Room**.



These rooms have **bright colours** and lots of pictures.



We will go to the **Dining Room**



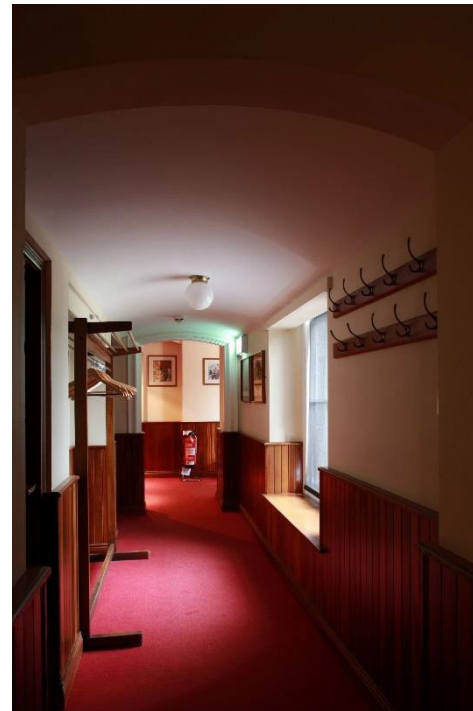
and the **Drawing Room.**



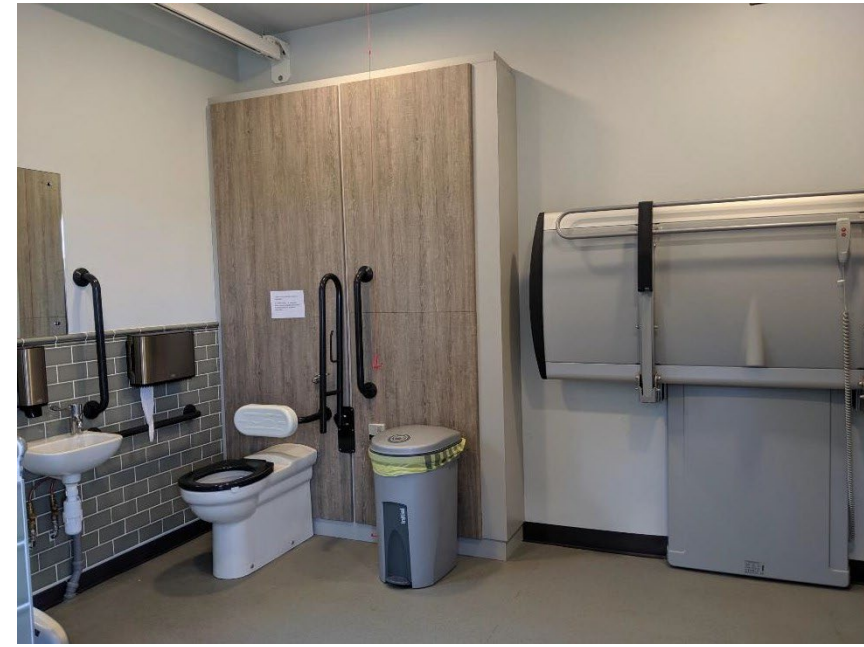
I can use the toilets in the **Stable Yard** or the **Clore Learning Centre**



I can also use the toilet inside the **house**.

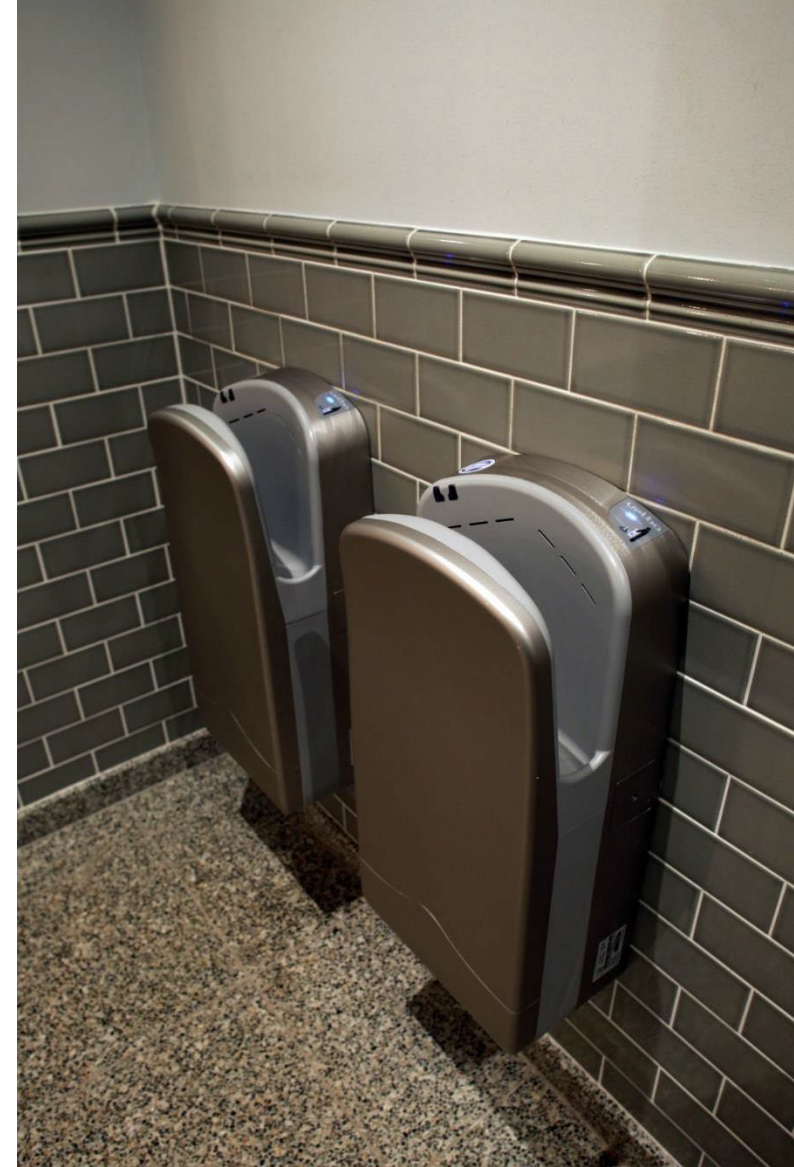


There is a **Changing Places** at the **lower site**.



The toilets might be **smelly**.

Some of them have hand driers that are **noisy**.



Lots of the **doors** have **buttons** to press to make them open.

There are **signs** to tell you where to go.



I will have a great day at
Hillsborough Castle and
Gardens!

