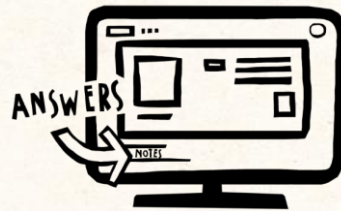


HOW TO USE - NOTES FOR TEACHERS

These resources from Historic Royal Palaces are multi-purpose.
They are ready for you to tweak and use in your lessons.



For the best experience,
download and open the
file in the PowerPoint
desktop app.



Answers are found
under the slide. Click
on the notes symbol at
the bottom of the screen.

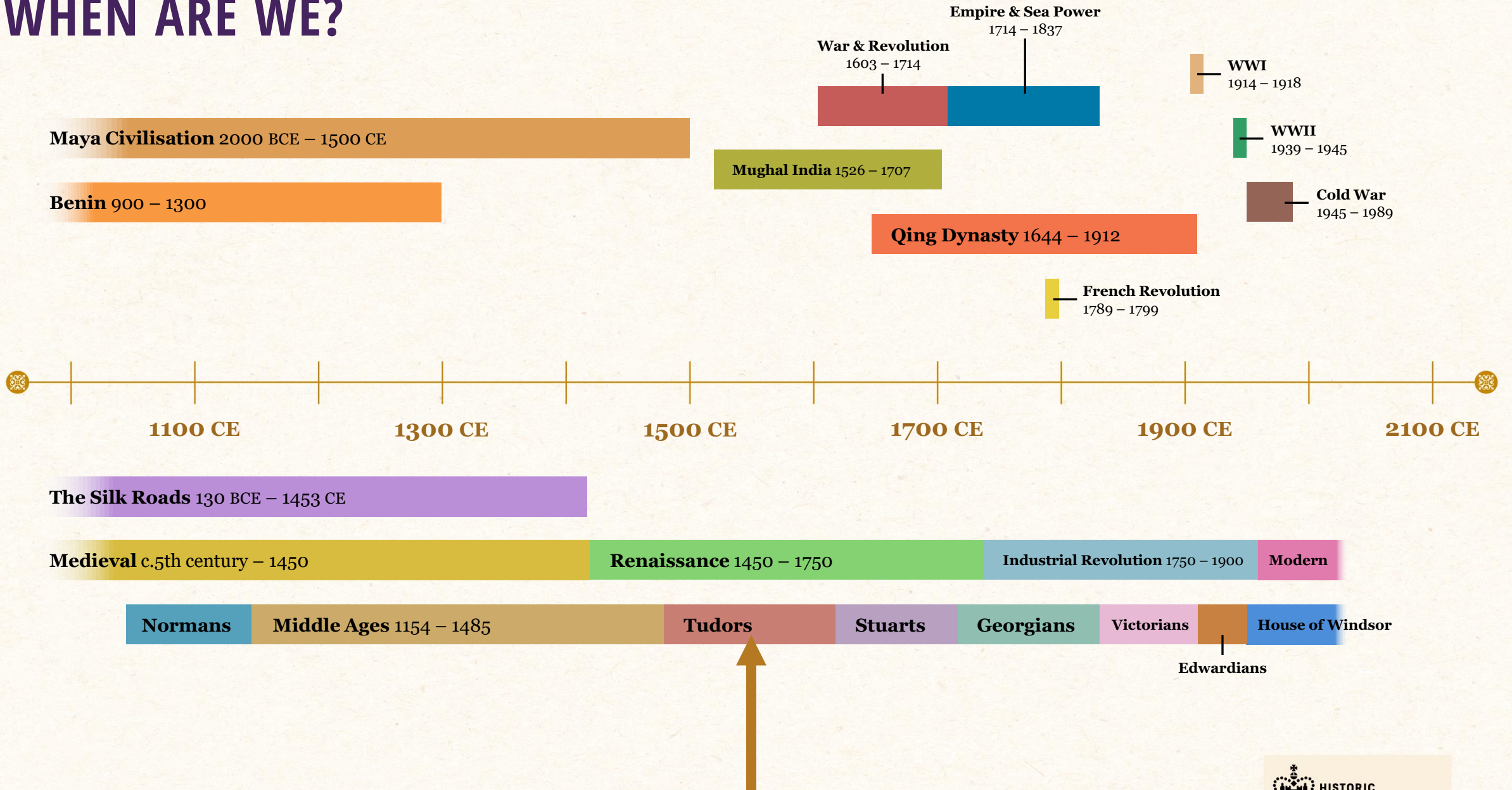


Delete text and images
to make your own
worksheets.

Disclaimer and Use Terms

We are the owner or the licensee of all intellectual property rights in these resources which are protected by copyright laws and treaties around the world. All such rights are reserved. These resources, and the content included within them, may be used by you for educational purposes only. This means that you may download the resources and use or share them solely in educational environments (including for home school lessons) or as part of homework. You may not share the resources other than for the above purposes and you must not use the resources, or any part of them, for any commercial purpose.

WHEN ARE WE?



ELIZABETH I'S TOWER OF LONDON CHRONOLOGY



1533
Elizabeth
is born



May 1554
Elizabeth
imprisoned at
the Tower of
London



1603
Elizabeth dies



1553
Edward VI dies
Mary becomes
Queen



1558
Mary dies
Elizabeth becomes
Queen



ELIZABETH I'S TOWER OF LONDON CHRONOLOGY



1533
Elizabeth
is born



February 1554
Lady Jane
Grey executed
at the Tower
of London



May 1554
Elizabeth
imprisoned at
the Tower of
London



1586
Babington Plot
Anthony Babington
imprisoned in the
Tower of London



1597
Jesuit Father
John Gerard
escapes from the
Tower of London



1603
Elizabeth dies



1553
Edward VI dies
Mary becomes
Queen



1554
Wyatt Rebellion
Thomas Wyatt
imprisoned in the
Tower of London



1558
Mary dies
Elizabeth becomes
Queen



1595
Philip Howard
Earl of Arundel dies



1601
Robert Devereaux
attempts to rebel



ELIZABETH I'S TOWER OF LONDON CHRONOLOGY



1533
Elizabeth
is born



February 1554
Lady Jane
Grey executed
at the Tower
of London



May 1554
Elizabeth
imprisoned at
the Tower of
London



1559
Elizabeth
parades from the
Tower of London
for her coronation



1586
Babington Plot
Anthony Babington
imprisoned in the
Tower of London



1597
Jesuit Father
John Gerard
escapes from the
Tower of London



1603
Elizabeth dies



1553
Edward VI dies
Mary becomes
Queen



1554
Wyatt Rebellion
Thomas Wyatt
imprisoned in the
Tower of London



1558
Mary dies
Elizabeth becomes
Queen



1561
Katherine Grey and
Edward Seymour
imprisoned in the
Tower of London



1595
Philip Howard
Earl of Arundel dies



1601
Robert Devereaux
attempts to rebel



CLASSROOM TASKS



Q1 How old was Elizabeth when she was imprisoned?

Q2 Can you place these rebellions and plots in date order from first to last?

- Thomas Wyatt's rebellion
 - Robert Devereaux's rebellion
 - Anthony Babington's plot
-

Q3 Philip Howard was imprisoned for 10 years before he died at the Tower. When did he become a prisoner?

Q4 What was the name of the Jesuit who escaped from the Tower?

VOCABULARY LIST

rebellion | an act of armed resistance to an established government or leader

Jesuit | Catholic priest whose mission was to restore the Catholic faith to England

