



HISTORIC ROYAL PALACES

## MEMBERS MINIBEAST HUNT WORD SEARCH

L S P I D E R N K E K  
 U A L S T L P P Z A E  
 D U D I L S Y A V R S  
 X P J Y N U G A U T U  
 N R N A B B G N T H O  
 X E I D F I C T G W L  
 H L A G B V R P F O D  
 B I I R S E R D A R O  
 Y L F R E T T U B M O  
 Q K Z E F A F S H D W  
 E U B H G N Q Q K C L



- ANT
- BEE
- BUTTERFLY
- EARTHWORM
- LADYBIRD
- SLUG
- SNAIL
- SPIDER
- WOODLOUSE



### TOP TIP

Tread lightly so you don't scare the bugs away. Minibeasts are small and delicate, take care if you pick them up and always put them back where you found them.



Explore your outdoor space to find the minibeasts. Tick them off as you go and then complete the wordsearch. How many will you discover?

# MEMBERS MINIBEAST HUNT

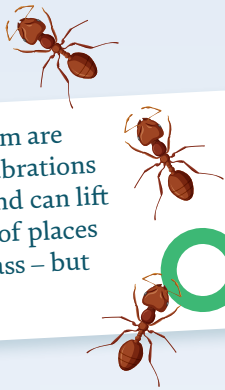


### SPACE TO STIR AND BE STIRRED

TOWER OF LONDON • HAMPTON COURT PALACE • BANQUETING HOUSE  
KENSINGTON PALACE • KEW PALACE • HILLSBOROUGH CASTLE AND GARDENS

## ANT

Ants are social insects that live in colonies, and most of them are female. They don't have ears and instead listen by feeling vibrations from the ground through their feet. Ants are very strong and can lift 20 times their own body weight! They can be found in lots of places outdoors including in soil, borders, compost heaps and grass – but they are very small, so you'll have to look closely.



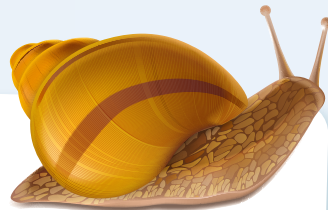
## SPIDER

Spiders come in all shapes and sizes, most common spiders are completely harmless and more scared of you than you are of them! There are more than 45,000 known species across the world. Spiders love tight crevices and gaps they can crawl into and hide. Look under leaves, on the soil, under pots and stones; webs are a good sign that there's one nearby.



## SNAIL

There is fossil evidence that the snail family lived nearly 500 million years ago, meaning snails' ancestors are one of the earliest known types of animals in the world! Land snails like the ones we find in our gardens cannot hear but they do have eyes and use their sense of smell to find food. Their spiral shell protects their soft body and organs. Find snails curled up in cool, darker spots such as under rocks, pots and leafy areas close to the ground.



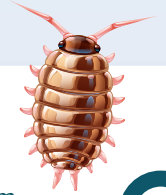
## BUTTERFLY

There are 59 butterfly species resident in Britain but only a handful are likely to be seen in our gardens. Butterflies can taste with their feet and their wings are transparent. The beautiful colours and patterns often seen on their wings help protect them from predators and to attract a mate. Butterflies are attracted to nectar plants and are easiest to spot during calm, sunny conditions around the middle of the day.



## WOODLOUSE

Woodlice are abundant animals found in most gardens and greenhouses. Large numbers can often be seen in compost heaps where they help break down plant material. This hardy minibeast has in-built armour, 14 legs and likes to hide in warm, moist places. Look under stones, pieces of wood and pots.



## BEE

There are over 270 species of bees in Britain and they feed largely on nectar and pollen from plants. British bees can generally be divided into three groups: bumblebees, solitary bees and honeybees. They have 4 wings and can fly up to 12mph (very fast for a minibeast!) Look for bees on flowering plants and shrubs.



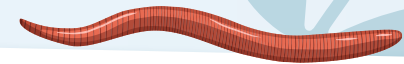
## SLUG

Slugs are similar to snails but without a shell. They are slimy and use their slime to move freely and safely across different ground. They like to eat plants in the garden, leaving holes in stems, leaves and flowers. In dry, cold weather they stay deep in the soil so are usually only above ground between April and October. Find them in cool, dark places like under pots, saucers and in shaded flower borders.



## EARTHWORM

Earthworms vary in size and colour but are all covered in tiny hairs that allow them to grip the soil and move. They eat decaying plant material and are important to soil structure and fertility. Earthworms can be found in the soil's top few centimetres – you won't need to look far!



## LADYBIRD

Ladybirds are spotted and brightly coloured, which warns predators of their bitter taste. During the winter, adults hibernate in cracks and leaf litter; they emerge in April to find a mate. Until October, they can be found in a number of natural habitats including flower borders, hedges, herb gardens and shrubs.

